

Your complete guide to WA property

The Sunday Times

March 17-23, 2019

HOME



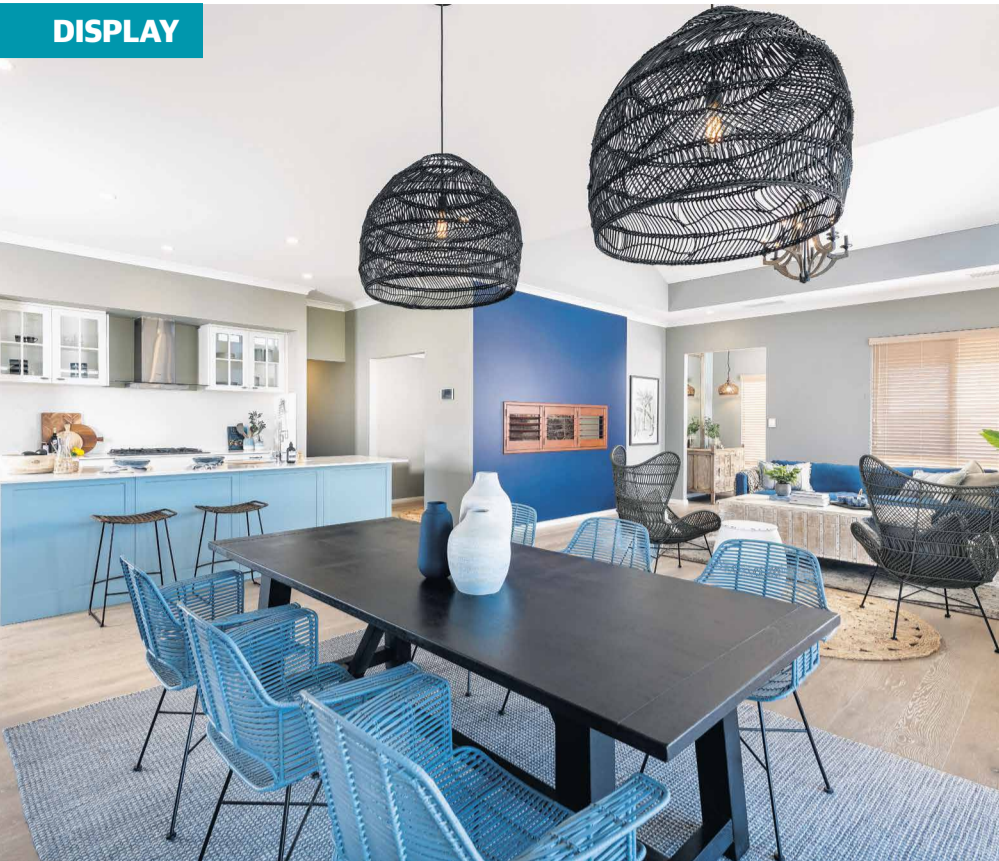
PEAK STYLE

Roomy sophistication abounds



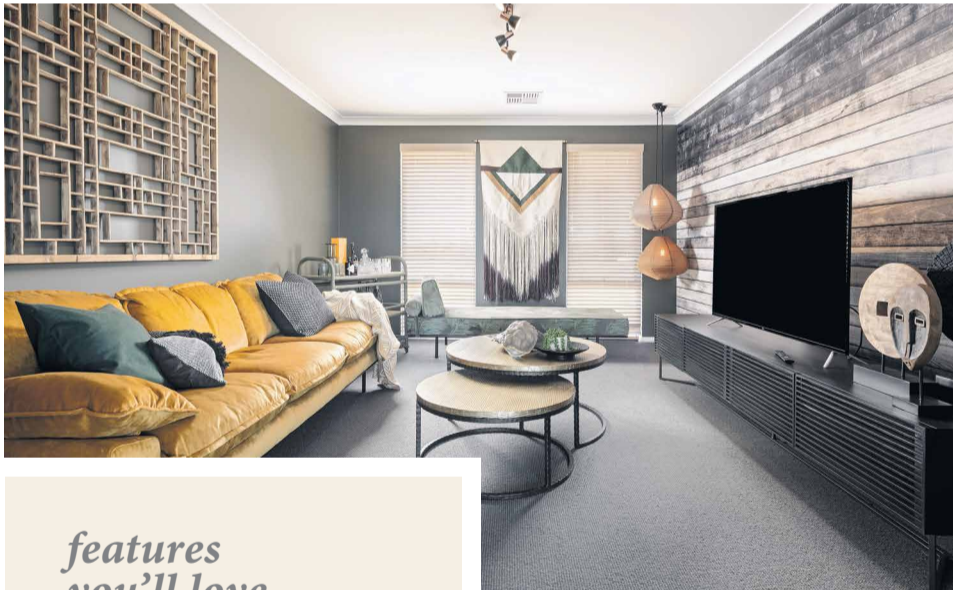
FLIPside

DISPLAY



VERSATILE HOMESTEAD BOASTS MODERN EDGE

The Blaxland Retreat by The Rural Building Co offers a unique floor plan that can be adapted to a variety of lot configurations.



CENTRAL to the innovative and modern design is its ability to take advantage of any vistas a block might have.

“Views can be appreciated from most parts of the home,” The Rural Building Co principal designer Robert Kirkovski says. “A centrally located living area also establishes a good relationship between the front and back.”

The front elevation of The Blaxland recalls homesteads of old, while a stone feature wall adds depth, character and street appeal.

“This display has the charm of a traditional family home and a unique approach to delivering a harmonious lifestyle for the entire family,” Robert says.

A clever floor plan offers residents some peace and quiet, with separation of space achieved without sacrificing the design’s flow.

“The home suits a family that wants privacy for both adults and children by providing great separation whilst still enabling easy access to the central main living areas,” Robert says.

“The home is a great entertainer – a home that makes having friends and family over a breeze.

“The columnless corner sliding doors of the alfresco open out to the outdoor living areas, creating a true seamless indoor-outdoor

experience, while at the heart of the home the free-form living and dining area is complete with a large kitchen and scullery offering direct access to the alfresco area.”

Robert says the integration between indoors and out at the back of the home carries through to the front.

“The front segment of the home has a wraparound verandah that can be accessed from the living areas,” he says.

“These features make the entire home a great place for social gatherings and offer year-round enjoyment.”

When it is time to turn in for the night, parents can retire to the luxurious master suite which has an ensuite with a double vanity, walk-in robe and its own porch.

This area is located alone on one side of the house, offering that extra bit of privacy, and sits adjacent to the theatre room.

The remaining three bedrooms are on the other side of the home together with a bathroom and study, creating a nice balance of space.

The Blaxland Retreat comes in three designs – Original, Classic and Heritage.

RHYS PRKA

features you'll love

SMART FLOOR PLAN

The innovative design means the display can be adapted to a range of different lot configurations.

FRONT ELEVATION

The front of this home is a thing of beauty – a wonderful mix of textures and materials complemented by a wraparound verandah.

SCREEN TIME

Sit comfortably, relax and zone out for a bit in the comfy theatre room.



THE BLAXLAND RETREAT

The Rural Building Co

Checklist

PRICE From \$305,798 (Perth price)

LOCATION 113 Trigger Plant Loop, Denmark

OPEN Mondays and Wednesdays, 2-5pm; Saturdays and Sundays, 1-5pm.

SIZE 303.72sqm

WIDTH 16.73m

LENGTH 26.9m

GARAGE 36.98sqm

FEATURES Open layout, theatre room, verandah, alfresco, scullery.

PHONE 1800 643 800

WEBSITE www.ruralbuilding.com.au