

DISPLAY



CHARACTER UNFOLDS IN RUSTIC HOMESTEAD

Taking the form of a rustic Australian homestead, The Rural Building Company's Ferguson Retreat pertains to be modest, warm and immediately welcoming.

WITH bush pole supports and a sizeable verandah, this striking three-by-two sanctuary flaunts a wide frontage that wouldn't look amiss on a sprawling country or corner block.

The Rural Building Company designer Robert Kirkovski says the home takes its cues from the rolling hills and picturesque agricultural

hinterland of the South West's Ferguson Valley, with its earnest, romantic facade opening up the living spaces and inviting the outside in.

"It has been created to capture views whilst allowing for the entertaining and living areas to have direct access these areas," he says.

"The home is clean and simple in form and accented with differing material to create interest and character.

"The combination of weatherboards, custom orb cladding and feature render gives the home a stylised yet relaxed feel."

Just inside the entryway is a comfy home theatre, separated from the rest of the home for total seclusion during movie nights.

Beyond the theatre is the ample, galley-style kitchen, complete with a large open-plan scullery, fridge nook and walk-in pantry. The hotplate and island bench are situated in the centre for easy access, which Robert says highlights the home's fluency with playing host.

The kitchen forms one part of the free-form living and dining area, which sits at the centre of the home and vaunts vaulted ceilings and feature gable windows to accentuate the impression of space.

Double sliding doors open onto the verandah, allowing for soirees and celebrations to spill outside and into home's surrounds.

At the far end of the home is the master suite and study nook, the latter of which Robert says is ideally located for parents who want to work

features you'll love

SNUG AS A BUG

The cosy home theatre can be found tucked behind the kitchen, secluded from the rest of the home for the utmost quiet on comfy movie nights.

PUMP UP THE VOLUME

Raking ceilings and feature gabled windows in the free-form living room accentuate the sense of space and bathe the interior in a warm, natural glow.

FROM DAWN TILL DUSK

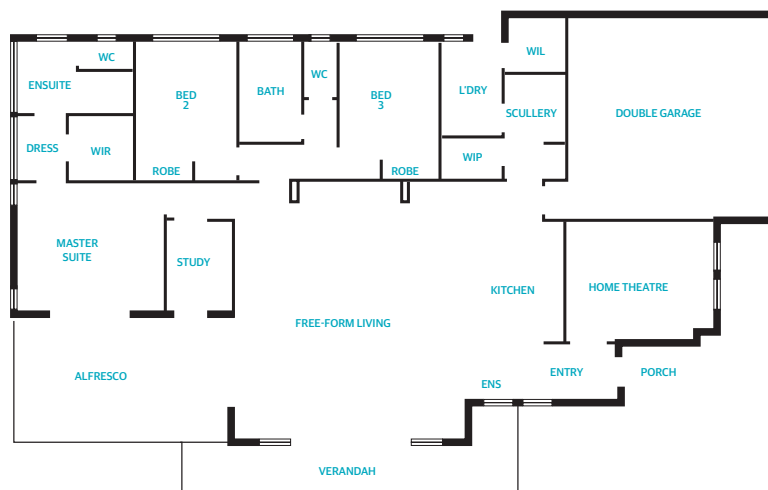
Alfresco access from the master suite makes it the perfect spot for a brisk breakfast coffee or intimate evening drink.

THE FERGUSON RETREAT

The Rural Building Company

Checklist

PRICE	From \$261,326 (Perth metropolitan), from \$255,324 (Bunbury)
LOCATION	8 Pascoe Way, Eaton
OPEN	Mondays and Wednesdays, 2-5pm; Saturdays and Sundays, 1-5pm.
SIZE	277.81sqm
WIDTH	14.35m
DEPTH	22.72m
GARAGE	37.96sqm
FEATURES	Open-plan living area with vaulted ceilings, galley-style kitchen, home theatre, study nook, master suite with private alfresco access, gabled windows, wide verandah.
PHONE	1800 643 800
WEBSITE	www.ruralbuilding.com.au



from home or keep an eye on young children and their homework.

Rounding out the offerings in the master suite is a dressing room, walk-in robe and ensuite bathroom with his and her vanities, a double shower and views to the outside.

Private access to the alfresco is the icing on the cake; a dream come true for parents who love a strong morning coffee or intimate nightcap on the patio.

Last but not least, the rear of the home is

reserved for the remaining two minor bedrooms, each with their own built-in robe, and bathroom with separate powder room.

Robert says the distinction between the living spaces, the bedroom wing and the master suite makes The Ferguson Retreat great for families with older children who value their own space.

With the double garage and main entry situated to the side of the property, the design can accommodate a variety of different lots, from suburban to large open acreage blocks.

RHYS PASCOE