

We understand what country living is all about.

WE UNDERSTAND.

At The Rural Building Company we do things differently from other builders. Firstly, and most importantly, our overall attitude is very different from the typical project builder, and is reflected in our product. We choose not to represent a demographic or conventional consumer grouping but instead cater for people that have a differing sense of values.

Our customers are discerning, but most of all are lifestyle orientated. Our product reflects their situation, but not in the accepted sense. It's about difference, design, image, sustainability, romance, flair and sensibility. It's about adventure and individuality. Most of our customers reflect their unique position in society.

Environment. We understand and embrace the need to provide environmentally responsible housing. We embrace the philosophy of providing housing that contributes to Australia's endeavours to reduce CO2 omissions. Our housing not only covers solar passive design but also provides the opportunity for reduced power and water usage, and superior thermal management.

Materials. We are not constrained by conventional wisdom. We utilise materials which give us the best possible aesthetic and environmental outcomes. Brickwork and renders for thermal mass. Integrated materials using corrugated metals, weatherboards and paneling to suit topography and clay soils. We will mix and integrate materials to achieve an outcome.

The site. It's important to us that the home design suits the site - we won't compromise the topography of the land. We will also site the home to take advantage of northern sun and cooling

summer breezes. In fact, we are so passionate about bringing the home and its surroundings together to make one statement that, on occasions, we will actually decline to proceed with projects which do not meet our objectives.

RANGES.

The Retreat Range. This is an eclectic group of designs that don't fit into any particular housing style. Very much an expression of individuality, they're not everyone's choice in housing - a range of houses for a very discerning home buyer.

The Farmhouse Range. Typifies the original Australian homestead in traditional and contemporary formats. Long homes with open spaces and traditional verandahs. The grass roots of The Rural Building Company, this range reflects an Australian idiom in housing architecture.

The Country Range. The origins of The Rural Building Company, many of the homes from this range can be found scattered throughout Margaret River. They are more suited to the country town rather than the wider open spaces.

The Loft and Two Storey Range. Homes where the volume of roof space is either utilised as living space or to simply add space. Most have balconies to take advantage of a second storey outlook. Again, different in that brick is not the predominant material used - integrated construction has been used to give a very sophisticated outcome.

The Views Range. Originally designed to nestle into a hillside and take advantage of panoramic views or scenery, the first Views Range homes were set into a hillside in Pemberton overlooking a lake. The Views Range is far more

extensive these days, but those original designs are still some of our best sellers.

Your own Rural Building Company Original. So you've seen our homes and like them, but you have some very definite ideas about what you want in your home. Perhaps you want to incorporate the core ideas of one of our homes or start from scratch and use our construction ability and design knowledge to achieve your own Rural Building Company Original. Talk to our people about how you can create your very own Rural Building Company home.

A HOME FOR EVERYONE.

Unlike most building companies, we are not driven by the need to provide a range of houses for a particular demographic group. Everyone can afford a Rural Building Company home. As our vision statement says, we cater for individuals who are looking for homes that are not mainstream. To that end we have homes that could be suitable for a first homebuyer or a weekender on that special block of land. Our home designs break down into a number of differing alternatives while reflecting the very core nature of the original design. This allows everyone to share in The Rural Building Company experience.

The Garden View



Award winning designs. Since The Rural Building Company commenced operations we have won an impressive number of awards for design excellence, including six Golden Key awards. Each year we add more to our collection.

WE UNDERSTAND



WE UNDERSTAND



Our homes are available as far north as Kalbarri, Albany in the Lower Great Southern, Augusta in the South West, east as far as Merredin and just about everywhere in between. In regions not serviced by The Rural Building Company we entrust the building of our homes to WA Country Builders. All Rural Building Company homes offer a range of materials. Depending on the region you are building in, some construction methods and materials may not be available. Free-call 1800 643 800



The Rural Building Company - promoting environmentally responsible housing.

The Garden View



This has been one of our most sought after homes. First displayed in Dunsborough, it won the Regional Golden Key Award in 2000 for the best display home in the South West - a very daring design at the time, it had no formal entry and boasted a very unconventional break up of living spaces. But the biggest accolade the home has achieved is in the large number of home buyers throughout Western Australia that have chosen to build this home with us and who have told us what an incredible home it is to live in.

The View series was principally designed to nestle into a hillside or into a bush environment without being ostentatious. Evidence of the success of this can be found when driving along the back roads of Perth's foothills, or around the South West: the home sits virtually unnoticed in its environment.

The power of the home is its free-form living area which allows for 180 degree views and marries beautifully with the environment. Whether standing in the kitchen, seated at the dining table or sitting watching TV, one is involved in the outside environment.

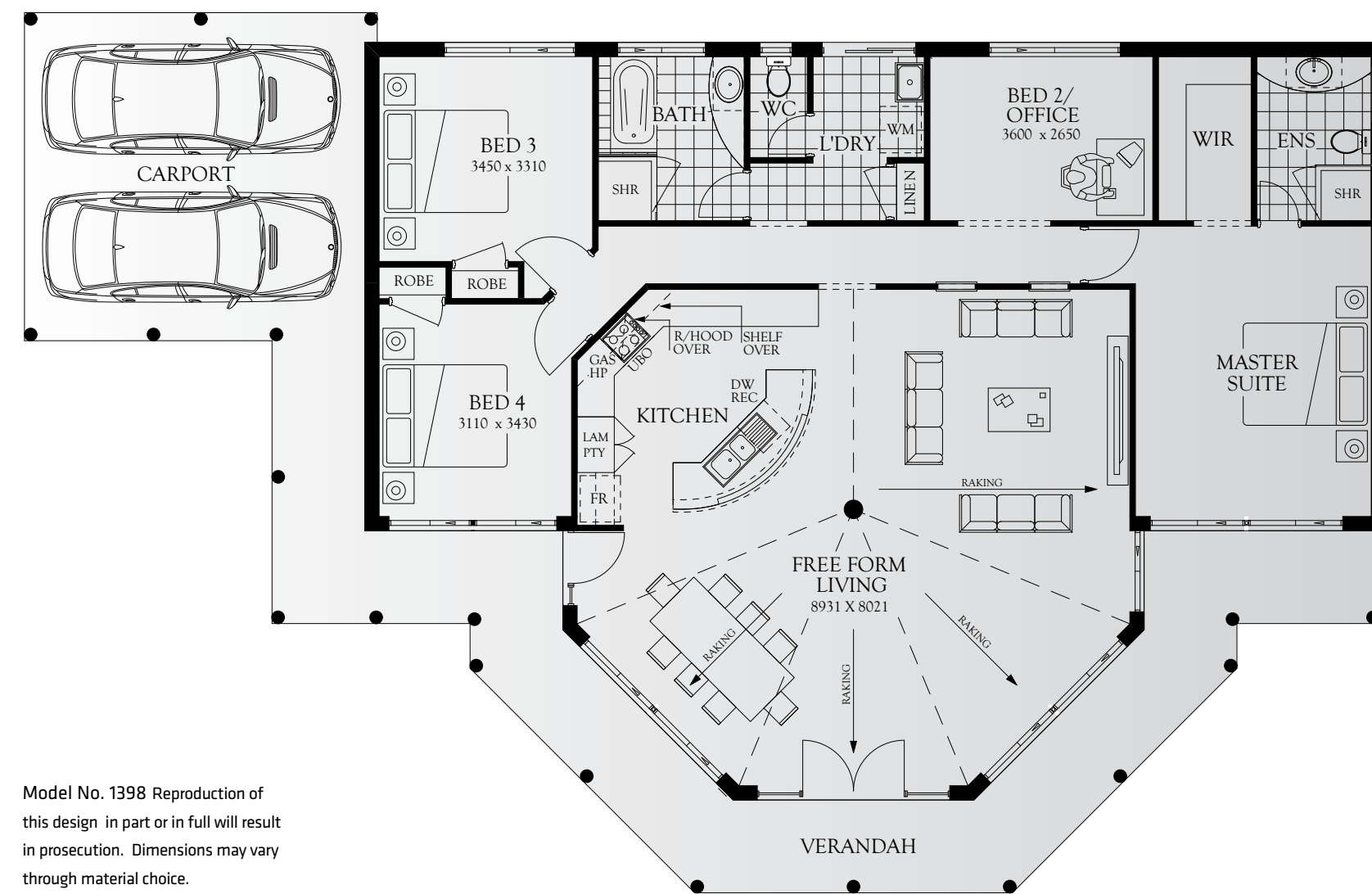
Also assisting in this marriage is the verandah with its bush poles and exposed timber. In the free-form living area a towering timber pole supports the roof structure, allowing a high raking ceiling through this total space. Beams run from the bush pole to the corners, adding to the earthy feel.

Perhaps the best aspect of this home is with the free-form living area facing north. This allows the intrusion of the winter sun, especially on the eastern and western sides of the hexagonal living space. South-west cross ventilation winds are then able to move through the windows on the southern side, cooling the home in summer. There are no windows to the bedrooms on the eastern and western sides and the carport protects bedroom three.

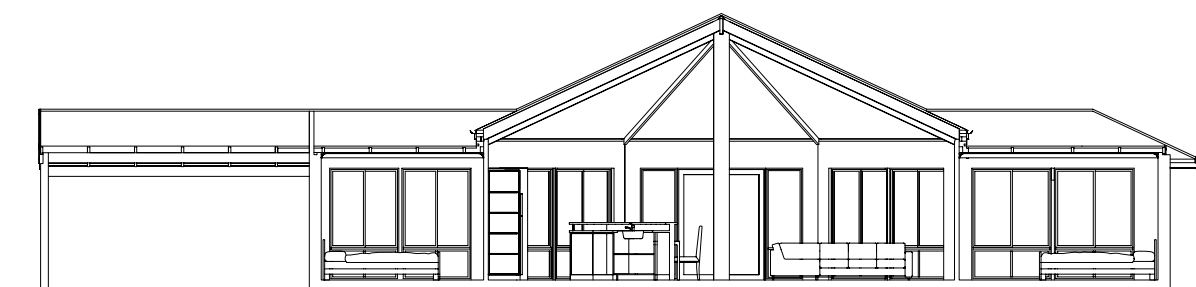
Like all Rural Building Company designs, The Garden View incorporates stringent environmental considerations. Ask for a specification brochure which details this and our high level of standard inclusions.

The Garden View is available in two alternative layouts, with either an activity or an office at the rear. Although there are photos of the home on the Internet we also have a large number of photos of both home designs that can be viewed on request.

We're confident you will find that this home not only functions well, but that it will give you the same level of enjoyment as it has to the many people who have chosen it as their home over the last nine years.



Model No. 1398 Reproduction of this design in part or in full will result in prosecution. Dimensions may vary through material choice.



Section through free form living showing raking ceiling.

\$

You have been talking to:

